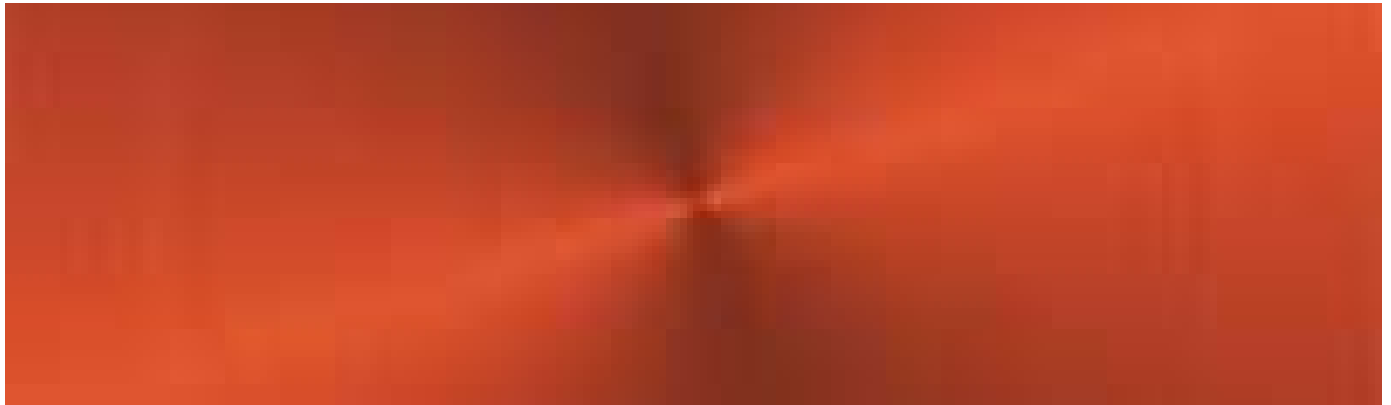


SANODYE® RED RLW

ALUMINUM DYE

Sanodye® Red RLW is a water soluble dyestuff for adsorptive dyeing of anodized aluminum.



BENEFITS

- Heavy metal free structure
- Overall good fade resistant properties
- Designed for interior applications

TECHNICAL DATA

Product Data

Delivery Form		Granules
Solubility in water	(20°C/69°F)	100 [g/l]
Recommended dye bath	pH	5-6
Recommended dye bath	buffer	Sodium Acetate
Light fastness		7
Single dye		✓
Dye blend		-

Applications

- Heavy metal sensitive applications
- Indoor